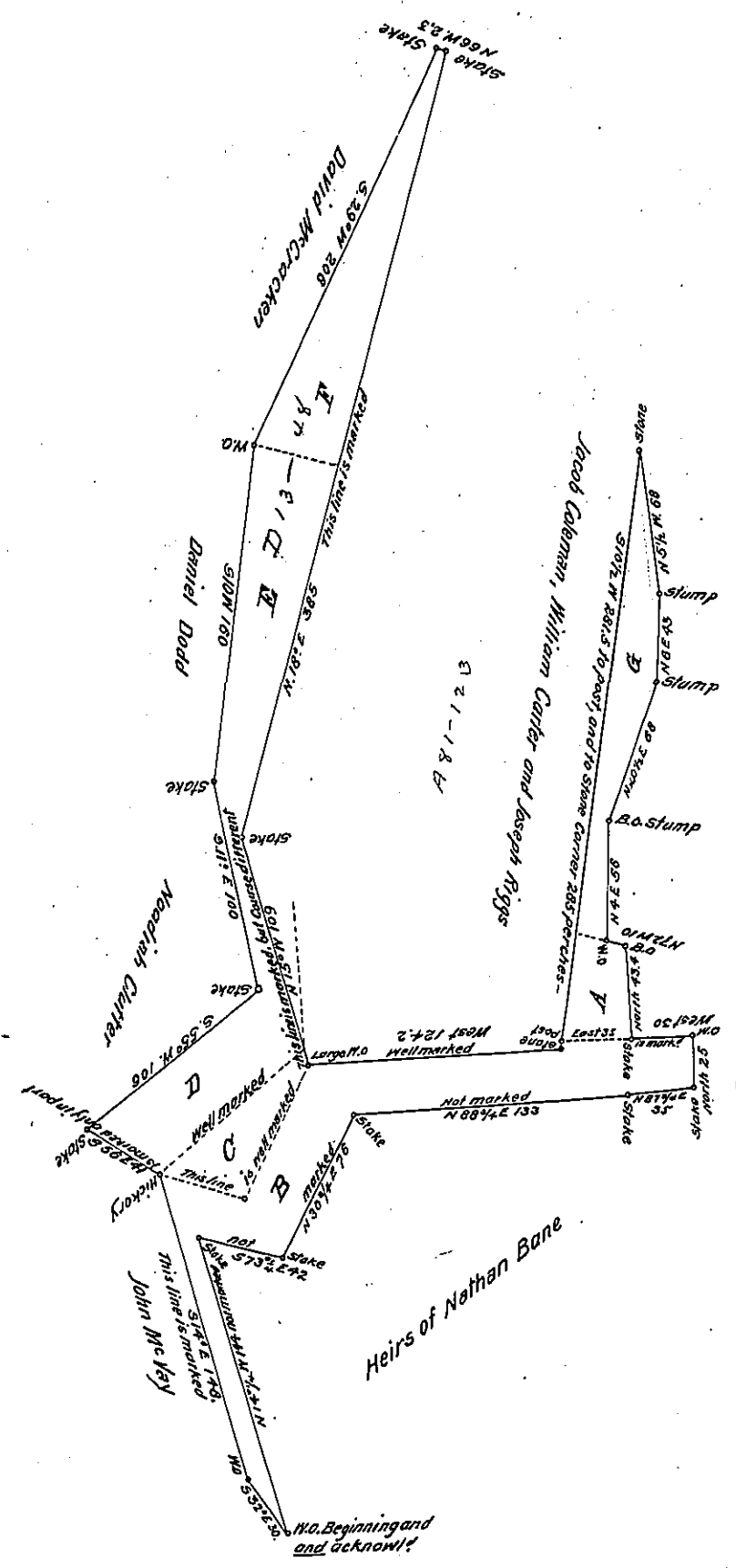


The annexed is a draught of a survey made August 12<sup>th</sup> 1816, in pursuance of a warrant granted John Moore dated 17<sup>th</sup> of July 1816, Situate in the middle fork of Ten-mile creek in Annewell Township, Washington county, containing in all one hundred and seventy three acres, and one hundred and eighteen perches with the usual allowance. The porteged with yellow, embracing Diagrams A and G, contains twenty eight acres and six perches with the usual allowance.



Rev. Cephas Dodd, John Moore, and Joseph Harris.....

The annexed survey is attended with the following disputes viz 1. With the Rev. Cephas Dodd, who it is said after the improvement made by Joseph Harris, under whom Moore claims, made a resurvey on his warrant, and united with Riggs line (see Diagram E) 2. With Nathan Bane heirs who claim to the lines of the Vays and Riggs, but either by an error in the survey, or an intended exclusion, the distance of the first line in Bane's Patent will not extend from the beginning corner to the Vays line by thirty perches, calling for an hickory, but stopping at a white oak, offset, and when the course and distance is continued to the Vays line, we find there a marked white oak but no hickory, though the lines to which said Bane claims are marked (excepting the line in succession to Riggs' west line, the courses of their Patent agreeing generally with the exception of the before mentioned hickory) but the distances do not. And when the courses and distances are run agreeably to the patent they will not embrace marked lines, and will exclude land, and form Diagram B, but will close nearer the first and last mentioned lines in said Patent (which are marked), and includes the proper quantity of land, but will interfere with the claim of the Rev. Dodd and Isaac Bane, which would still be the case if the courses and distances of said patent were accurately run from the Vays corner and includes more land, unless the distance was such, as to agree with the Vays, Riggs, and Dodd. 3. With said Riggs who claims a small piece of land within the above survey, which at the time Moores improvement was made by Harris, was actually vacant and unimproved which forms Diagram C. 4. With Deborah Clutter, who claims to the lines of Bane and Riggs, and when running from the Vays hickory corner, agreeably to the courses and distances of said Clutter's conveyance, there are a few marks to be found between the hickory and Riggs' line, thence it will interfere with said Riggs' land and embrace no more marks, neither will it unite with a certain white oak corner showed by Clutter himself, on the north side of his survey; and when reversing the courses and distances of John said white oak, it will exclude land and form Diagram D. 5. With Hor. Wright who claims land that was actually vacant and unimproved at the Moores improvement was first made by Harris, but Moore must break through the claim of Dodd (see Diagram E) Moores settlement is in Diagram F. 6. With Daniel...

Jacob Spangler Esq: S.G

James Reed D.S.

IN TESTIMONY that the above is a copy of the original remaining on file in the Department of Internal Affairs of Pennsylvania, made conformably to an Act of Assembly approved the 16th day of February, 1833, I have hereunto set my Hand and caused the Seal of said Department to be affixed at Harrisburg, this eight day of June 1906.

*James Reed*  
Secretary of Internal Affairs.